

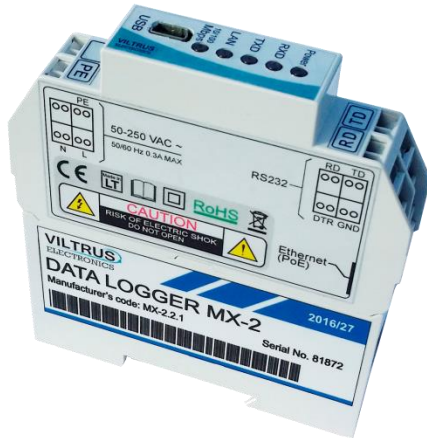
INTERFACES

RS232

RS485

Ethernet

USB




FEATURES


- Reading data from meters (heat, water, gas, electricity...)
- Transparent controller data exchange between serial RS232/RS485 (Modbus RTU) and Ethernet (Modbus TCP)
- RS232, RS485, Ethernet, USB interfaces
- Remote communication over Ethernet (RJ45, 10/100 Mbps)
- Power supply: 50-250VAC (50-60Hz), 50-250VDC or PoE (IEEE 802.3af)
- Mounting type: on DIN rail




MX-2 data logger is designed for data reading from meters (electricity, heat, water, gas and other), storing to local archive and data exchange between RS232/RS485 and Ethernet.


Application

Industrial monitoring 

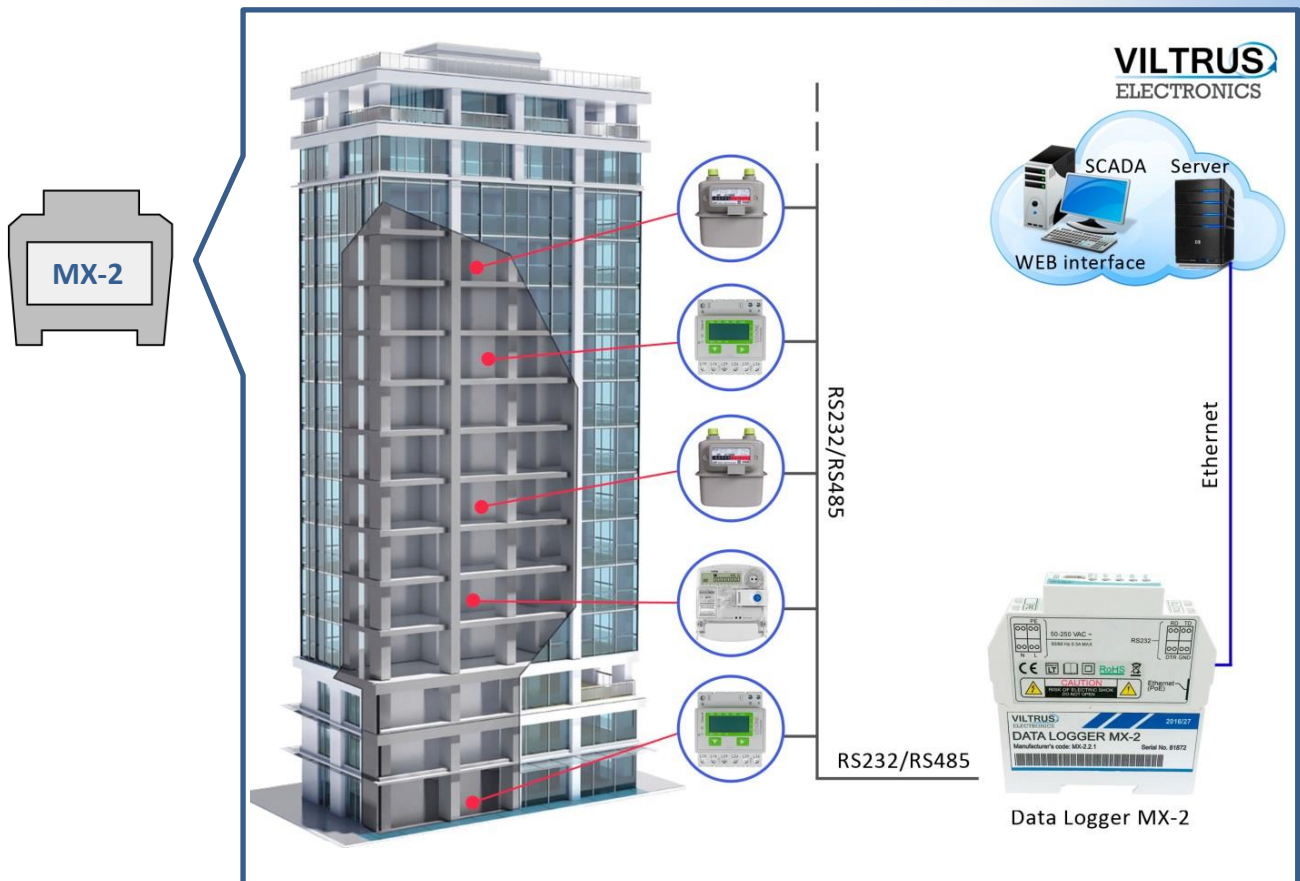
Commercial monitoring 

Residential monitoring 

Water/Heat metering 

Electricity metering 

Gas metering 



TECHNICAL SPECIFICATIONS

Description	MX-2 data logger
CPU	Cortex M3
Flash	archive storage up to 8 MB, independent data storage without power about 5 years
Interfaces	
RS485 (1 port)	distance up to 1,2 km, max 32 transivers, speed up to 38,4 Kbits/s
RS232 (1 port)	distance up to 15 m, speed up to 38,4 Kbit/s
Ethernet	10/100 Mbps, RJ45, distance up to 100 m
USB	mini USB type B, ver. 2,0
Protocols	
Modbus RTU, Modbus TCP/IP, IP, ICMP, UDP, TCP, DHCP, PPP, ARP, SNTP, IEC60870-5-104:2000, DynDNS	
General	
Power supply	50-250 VAC 50-60Hz, 50-250 VDC or PoE
Capacity	300mA MAX
Physical characteristics	
Dimensions	18x85x97 mm
Weight	105 g
Mounting type	on DIN rail
Protection type	IP20
Climate conditions	
Operating temperature	-25 to +60°C
Storage temperature	-40 to +60°C
Humidity range	5 – 95%, non-condensing
LED indication	
Serial ports read/write for each port	
Ethernet status	
Other features	
Warranty period	2 years

ORDERING CODE

MX-2.	A.	B
	0 – None 1 – RS485 2 – RS232 3 – I ² C	1 – 50-250 VAC/50-250 VDC power 2 – Power over Ethernet (PoE)

Example: **MX-2.1.2** (RS485, Power over Ethernet)